

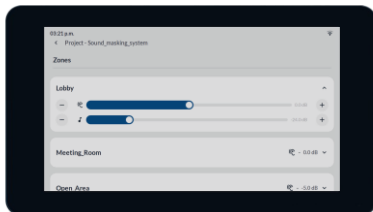
SMS-LINK

Centralized Control Panel
smartSMS-NET Sound Masking System

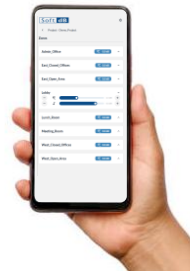
- Simple and easy masking sound and music volume adjustment in any zone
- 7" capacitive touch-screen
- Wall-Mount for sleek design
- Web browser interface
- Web API
- Password access
- Ethernet or WiFi connectivity
- Flexible power supply with PoE or USB-Power



Unleash the possibilities of your sound masking system with the SMS-LINK.



*7" touch screen control panel
for on-site access*



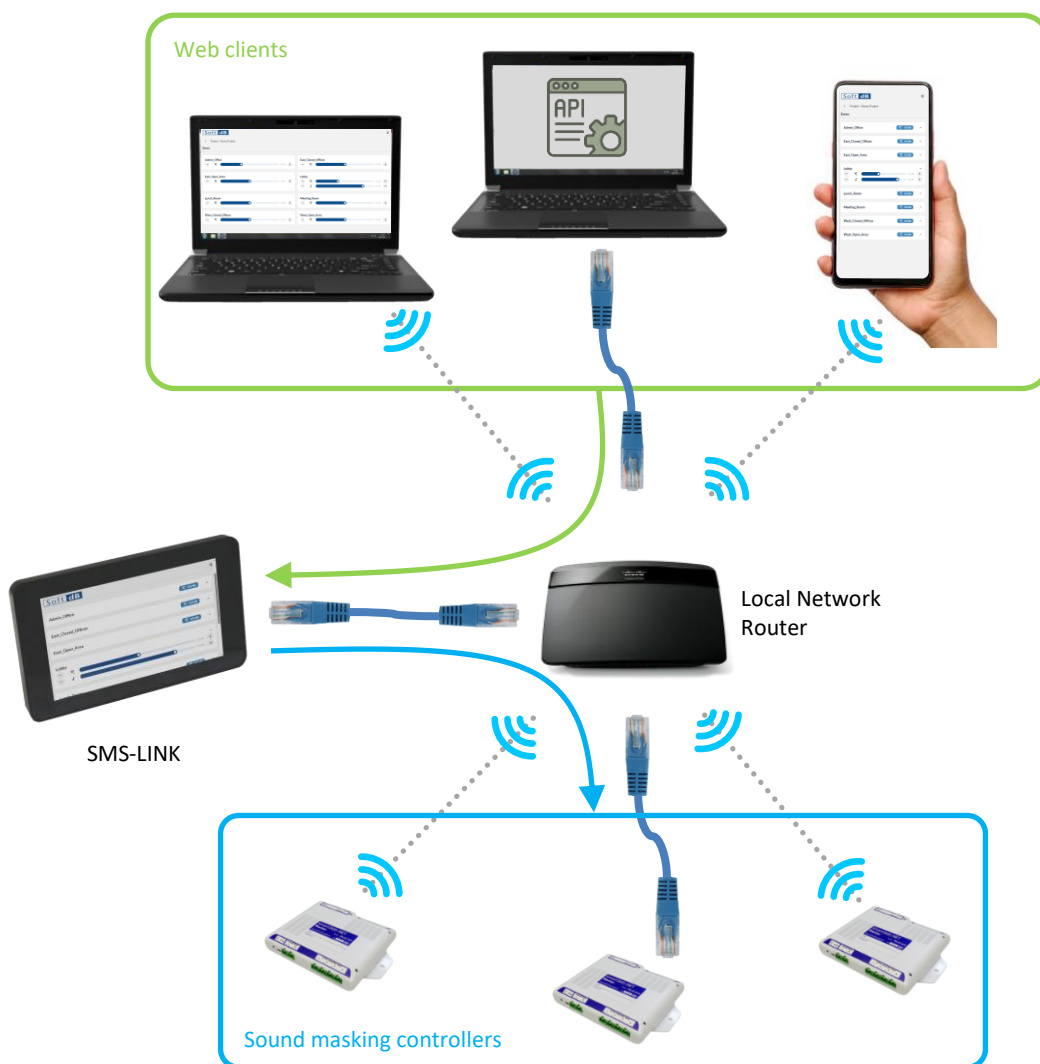
*Web browser interface
for access on mobile devices
and computers*



*Web API
for Building Management
Systems integration*

The SMS-LINK is the central access point of your sound masking system

- The SMS-LINK acts as a gateway between the end-users and the sound masking controllers.
- With Ethernet and WiFi connectivity, the SMS-LINK provides an extensive solution for your network infrastructure.
- The Web browser interface provides an easy way of accessing the system on mobile devices and computers without installing any software.
- The Web API provides a hardware abstraction layer that simplifies Building Management System integration.



Specifications

Volumes	
Sound Masking	±10 dB with respect to calibrated sound masking level
Music	30 dB
Connectivity	
Connectivity	TCP/IP
Interfaces	Ethernet (RJ45) or WiFi (802.11b/g/n, <u>WiFi radio module can be disabled if not required</u>)
Protocol	HTTP
Screen	
Size	7 inch (178mm)
Resolution	800 x 480
Touch Panel Technology	Capacitive
Power	
Powering Options	PoE or USB Power
PoE (Power over Ethernet)	48V, IEEE 802.3.af (optional PoE injector available)
USB Power	5VDC, 3A
Power Rating	Max 15W
Physical	
Size	198mm x 116mm x 44mm (7-13/16" x 4-9/16" x 1-3/4") - Bezel thickness 15mm (19/32")
Weight	500g (1.1lbs)
Mounting	Wall-mount/Desktop (flush-mount or rack-mount using optional bracket)
Included Accessories	
Power-Supply	USB Power Adapter with USB cable type C
Optional Accessories	
Locked Guard Box	Key-locked clear polycarbonate box, 248mm x 184mm x 86mm (9.75" x 7.25" x 3.33")
PoE Injector	19W IEEE 802.3af PoE injector supporting 10/100 Mbps
Flush-mount plate	Plate for mounting flush to wall
Rack-mount plate	Plate for mounting in 19-inch standard rack (3U height)