

SMS-FLAT

FLAT Sound Masking Speaker
User Guide



V20190725

Soft dB Inc.
1040, Belvedere Avenue, Suite 215
Quebec (Quebec) Canada G1S 3G3
Toll free: 1-866-686-0993 (USA and Canada)
E-mail: info@softdb.com

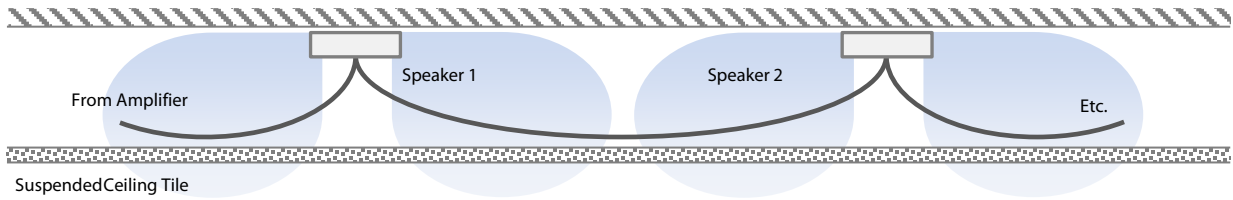
Soft dB
WWW.SOFTDB.COM

Content

1	Overview	2
2	Specifications	3
3	Installation.....	4
3.1	Safety Instructions	4
3.2	Connecting the Speaker	5
3.3	Securing the Speaker	6
3.4	Setting the Transformer Tap	7
4	Raised Floor Application.....	8

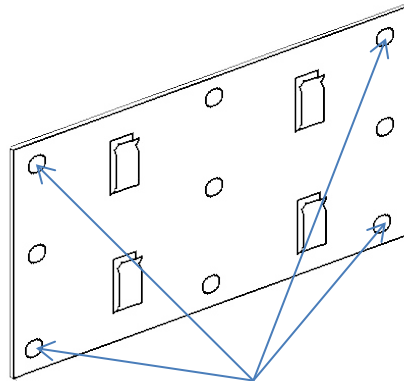
1 Overview

The SMS-FLAT loudspeaker is designed to generate the optimum masking sound in a tight space where a more standard loudspeaker wouldn't fit. Equipped with two drivers in dipole configuration, the SMS-FLAT provides an effective loudspeaker in a very compact form factor.

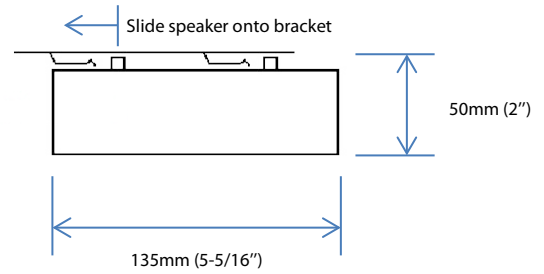


2 Specifications

Specifications	
Power	10 W
Line Voltage	25 V
Sensitivity	85 dB
Enclosure Material	Painted Steel
Frequency Response	100 Hz to 10 kHz
Connectors	Screw Terminal
Driver	2.5 x 10 cm (1" x 4") full range
Color	Black (RAL9011) or white (RAL9016)
Dimensions	190 x 135 x 50mm (7-1/2 x 5-5/16 x 2")
Weight	1.13 kg (2.5 lbs)
Box Dimensions	29.5 x 23 x 9.5 cm (11-5/8 x 9 x 3-3/4")
Shipping Weight	1.21 kg (2.7 lbs)



Use screws to fasten bracket to building structure



3 Installation

3.1 Safety Instructions

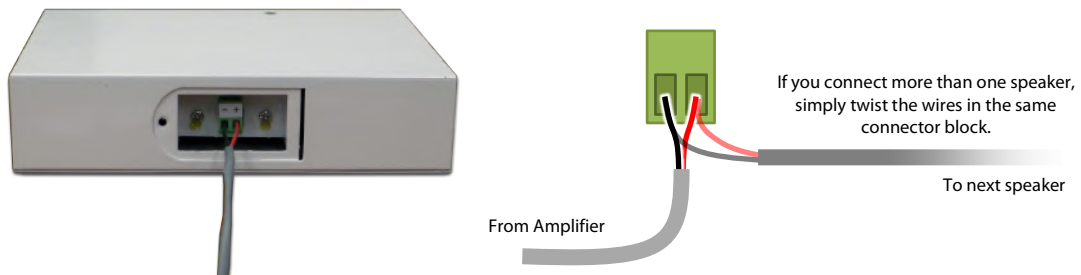
- Read and keep these instructions.
- Heed all warnings and follow all instructions contained within this manual.
- Install in accordance with the manufacturer's instructions.
- Clean only with dry cloth.
- Do not install near water.
- Do not block any ventilation openings.
- Do not install near any heat sources such as radiators, heat registers, stoves, or other apparatus (including amplifiers) that produce heat.
- Use the power cord with sealed mains plug appropriate for your local main supply as provided with the equipment. If the provided plug does not fit into your outlet contact the manufacturer.
- Protect the power cord from being walked on or pinched particularly at plugs, convenience receptacles, and the point where they exit from the apparatus.
- Only use attachments and accessories specified by the manufacturer.
- Refer all servicing to qualified service personnel. Servicing is required when the apparatus has been damaged in any way, such as when the power-supply cord or plug is damaged, liquid has been spilled or objects have fallen into the apparatus, the apparatus has been exposed to rain or moisture, does not operate normally, or has been dropped.
- Operate the product only with the voltage specified on the unit. Fire and/or electric shock may result if a higher voltage is used.
- Do not modify, kink, or cut the power cord. Do not place the power cord in close proximity to heaters and do not place heavy objects on the power cord and/or the product itself, doing so may result in fire or electrical shock.
- Be sure the installation of this product is stable, avoid slanted surfaces as the product may fall and cause injury, property damage, electrocution and/or fire.
- Do not open the cover.

3.2 Connecting the Speaker

- 1) Unscrew the cover plate to access the connector block:



- 2) Remove the connector block, connect the wires and put back the connector block in place. Use plenum rated cable and follow local regulations. Typical wire will be 18/2 FT4.



- 3) Fold the cable inside the cavity and put the cover plate back in place:

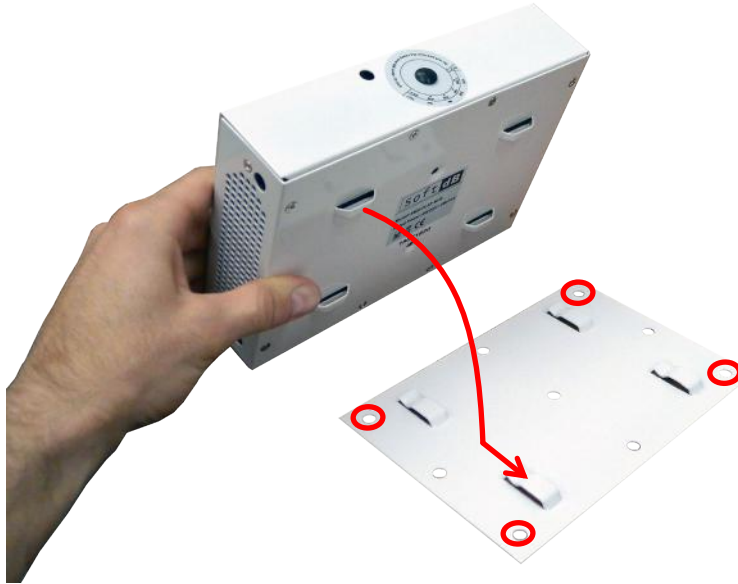


- 4) Secure the cable using the cable clamp:



3.3 Securing the Speaker

Secure the speaker by fastening the mounting bracket to the building structure using screws (not supplied). Slide the speakers on the mounting bracket.



Note: When mounting the speaker on a vertical surface, be sure to mount the bracket with the forks facing up to avoid the speaker from falling down.

It's recommended to use a security chain secured to the speaker through the provided holes in the enclosure:



3.4 Setting the Transformer Tap

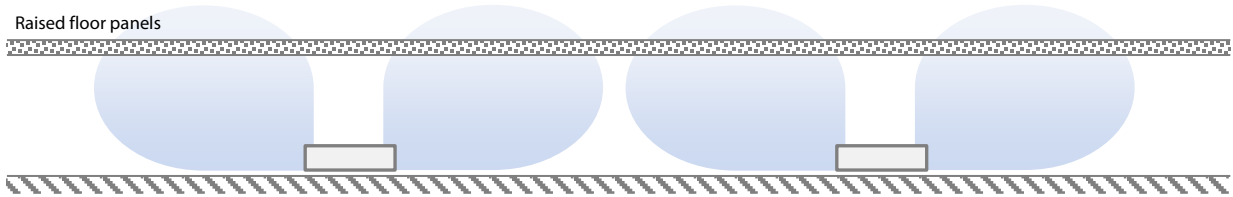
Remove the rubber cover from the tap knob. Adjust the tap setting using a flat head screwdriver:



The recommended tap for most applications is 4W @ 25V. Some limitations may apply to the sound masking controller. See controller specifications for more details.

4 Raised Floor Application

The SMS-FLAT speakers can also be used in a raised floor configuration where space is limited.



Since a raised floor panel has a high sound transmission loss, the sound power required to meet the sound masking target can be quite high, especially for low-frequency (bass) content. For that reason, it's recommended to lower the bass content of the target sound masking spectrum to limit the power demand. Below is the recommended spectrum shape for the SMS-FLAT speaker used in a raised floor setting.

